

INEVITABILITY

Dear Reader.

The feeling that something is going to happen, no matter how hard you try to avoid it, is often referred to as the state of inevitability! Have you ever put on a brand new white shirt or top to attend an important business lunch and at the time thought "I must be careful not to get any food on it." And, no matter how incredibly careful you are, at the end of the meal you discover a food stain down your front. Obviously had you been wearing older or darker clothes, this simply wouldn't have happened. But, the decision to wear a new white shirt or top to help you "standout from the crowd" made the chances of this unsightly food stain appearing virtually inevitable!

However, inevitability also manifests itself in different ways.

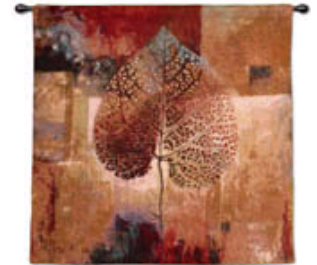
Perhaps you've sat on a half empty bus or free seat allocation plane and you instantly know that the 160kgs giant, who's squeezing himself through the door, is determined to sit next to you. It happens because it's completely inevitable!

But, on a more serious note, inevitability doesn't always have to be a bad thing!

Following the inevitable end of our summer vacations we are very pleased to bring you our September edition of e-matters, which includes our latest news and also inevitably highlights some top tips to help you in your business.

The European Marketing Centre

SMC Corporation



NP INNOVATION AT A GLANCE

ZSE_ISE 10 Ultra thin Digital Pressure Switch

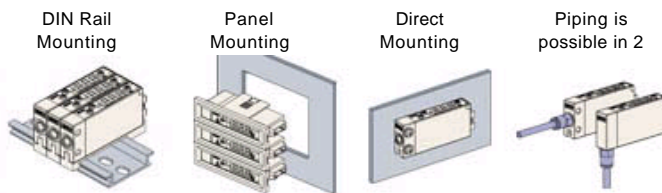
Space-saving is a reality when vertically mounted.



SMC's latest Digital pressure switch at 9,8mm high and 26,1mm wide is one of the most compact and lightweight switches on the market.

Strong & Reliable - all outer parts are made of steel.

It offers a wide range of **pipng and mounting** options.



Easy set up

The switch can be easily programmed in 3 quick and simple steps.



Our SMC specialist recommends it for: absorbed and seated work piece checking in transfer lines, for source pressure checking in air lines, and in applications that require accuracy in the vacuum pressure range.

Other Features

- Several output options:
 - o NPN or PNP open collector 2 outputs.
 - o NPN or PNP open collector 1 output + analogue output (voltage or current).
- 2 color output indication - Improves multi-angle visibility
Green light ON - OUT1 output / Red Light ON: OUT2 output
- Vacuum pressure range - 0.0 to -101.0 kPa.
- Password setting function - protection against manipulation
- Power saving function - the display can be turn-off to save its power consumption (up to 20% saving)
- Resolution-switch function - reduces the monitor to flicker; the accuracy is not changed, only the displayed values

Additionally, its copy function allows the master sensor to copy up to 10 slave sensors simultaneously ensuring reduced installation time and potential setting errors.



[+ Please click here for more information.](#)

KK130 - Compact, light and Energy Saving S Coupler



Bringing both **energy and money saving** benefits thanks to its 22% increased Cross Effective Area (larger than competition!). This new construction enables the inlet pressure to be reduced without detriment to the outlet pressure, therefore effectively reducing the compressor's air consumption.

Strong and Reliable - All external parts are manufactured in steel.

Easy to attach & remove

Our SMC specialist especially recommends it for: Applications that require strength, complex operations, and where vibration or impact are frequent (Sleeve lock mechanism available)

+ For all KK130 related information, please [click here](#).

EX120/121/122 - Serial Interface units now compliant with CompoNet™ protocols

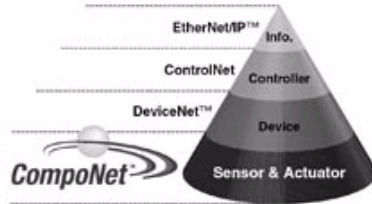


CompoNet protocol makes the communication and control **faster** than ever, now 1ms / 1024 points (compared to the 10 - 25 when using conventional protocols)

Up to 16 outputs

Our SMC specialist specially recommends it for:

Control structures with a certain level of complexity and those that require a high response speed.



+ For all New EX120/121/122 related information, please [click here](#).

E210/310/410 - Modular Adapter



This modular adaptor is ideal for connecting non modular SMC products into FRL units. It is designed for use with our popular ITV, ARG or any of our 3/2port and 2/2port valves

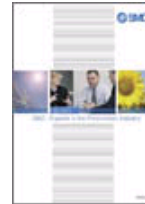
Easy to connect to different size products and without the need for rotation.

+ For all E210/310/410 related information, please [click here](#).



SMC - Experts in Industries

Our commitment to a number of industry sectors and our understanding of their different needs has been highlighted by the launch of our new range of Experts in Industry Leaflets. Currently available for the Photovoltaic, Beverage and Snack Industries and with more coming on stream over the next few weeks, please keep an eye on our [web site](#) for all our latest additions.



Photovoltaic Industry



Beverage Industry



Snack Industry



Your contact details have been gathered through the CADENAS Web Site. All your gathered personal data are a part of database property of SMC's European Marketing Centre and we guarantee a lawful use of the same.

SMC does not share, rent, sell, or otherwise disclose your personal data to third parties under any circumstances.

In compliance with the Directive 95/46/EC of the European Parliament you will be able at any moment of exercising your rights of access, rectification, cancellation or opposition acknowledge in the mentioned law by contacting SMC on emcmarketing@smc.smces.es

SMC - European Marketing Centre -
Zuazobidea 14, Pol. Industrial Jundiz
01015 Vitoria - Spain
emcmarketing@smc.smces.es